



|| 00  
STOCKTON

*“In order to be irreplaceable  
one must always be different.”*

- COCO CHANEL

---

Located in San Francisco's historic Union Square, 100 Stockton is a visionary redevelopment in a celebrated location. This stunning glass structure features flagship retail, creative office space, expansive event areas, and a dramatic rooftop dining venue. Extending nearly half a city block, 100 Stockton includes 250,000 square feet of mixed-use space on eight levels. Upscale multi-purpose locations like 100 Stockton are the future, creating new experiences that engage, educate, and facilitate community.

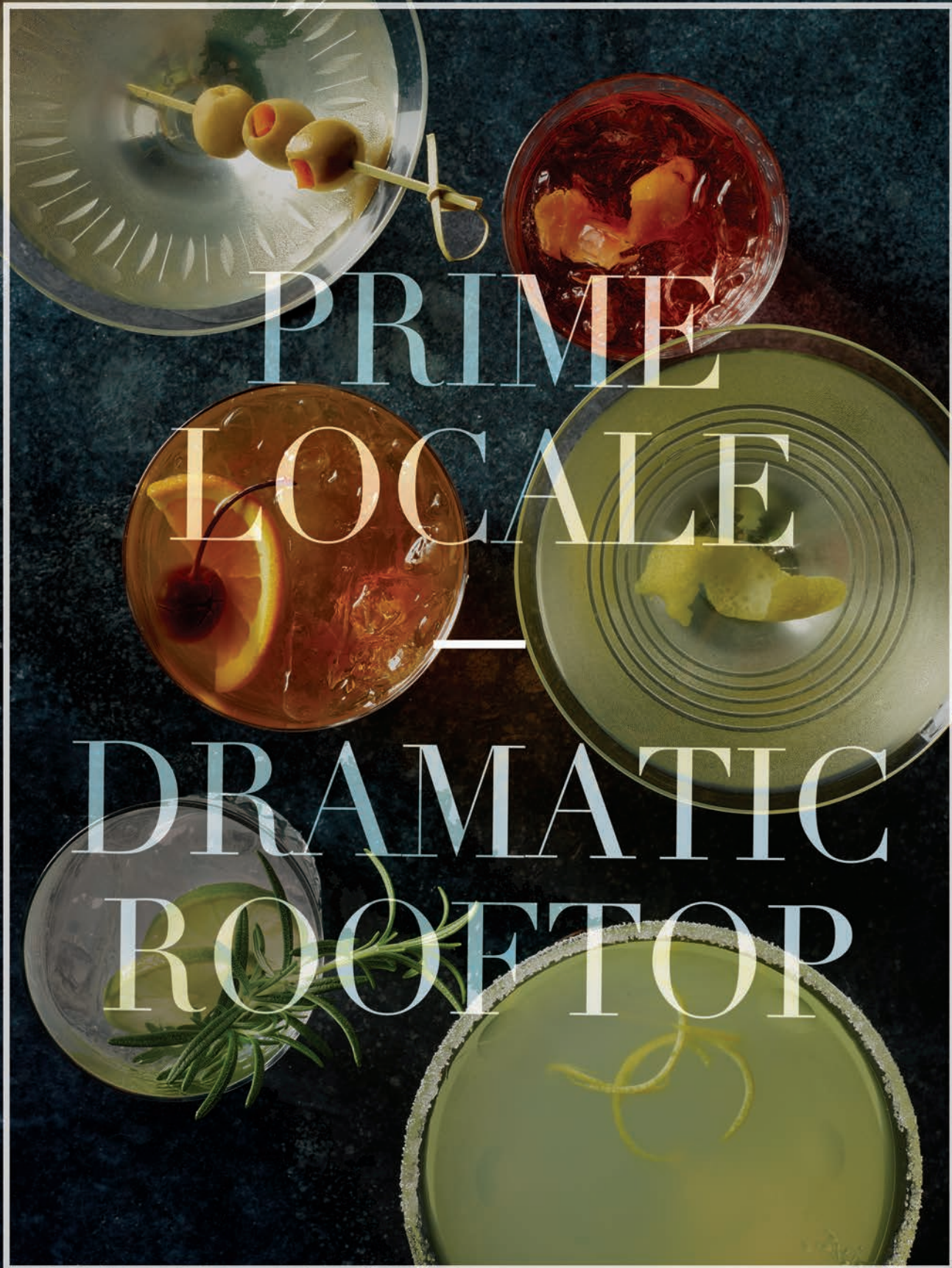
---



STRIKING  
DESIGN  
—  
A NEW  
PARADIGM

CORNER VIEW  
—  
Stockton & O'Farrell





PRIME  
LOCALE

DRAMATIC  
ROOFTOP

*“We shape our buildings;  
therefore they shape us.”*

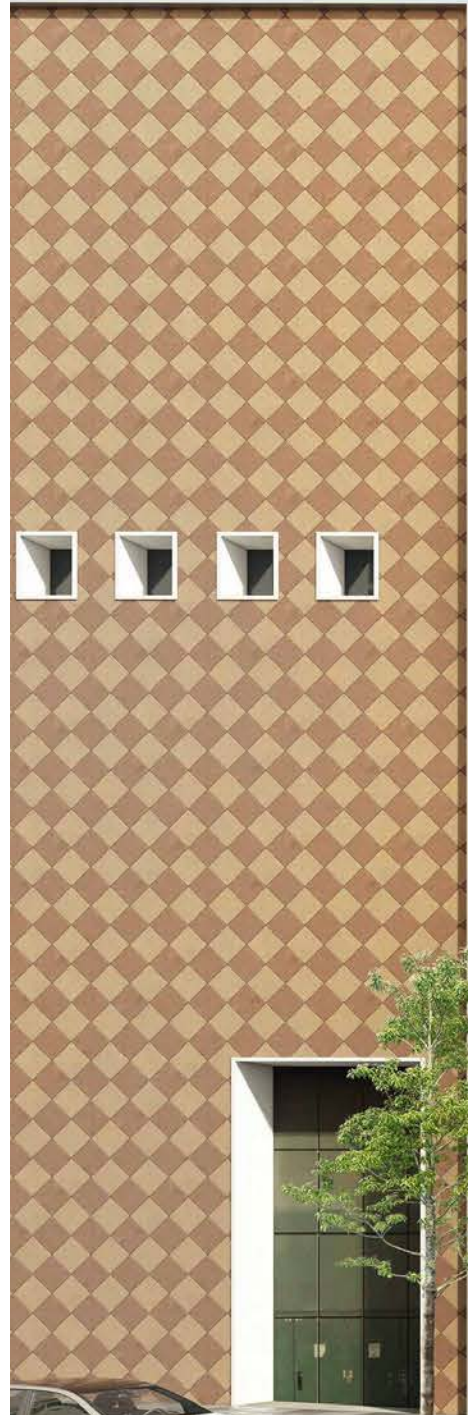
— WINSTON CHURCHILL

---

Designed by Gensler, one of the world’s leading architecture firms, the clean, modern aesthetic is a welcome addition to a prime corner in one of the world’s premier shopping destinations. As retail activity has shifted to the South side of Union Square, the key intersection of Stockton and O’Farrell has become the center of San Francisco’s new retail core. Given the City’s legendary food scene, the building’s rooftop restaurant and wraparound deck will be notable as one of the few open-air rooftop dining terraces in San Francisco.

---

STOCKTON STREET VIEW  
—  
West Perspective



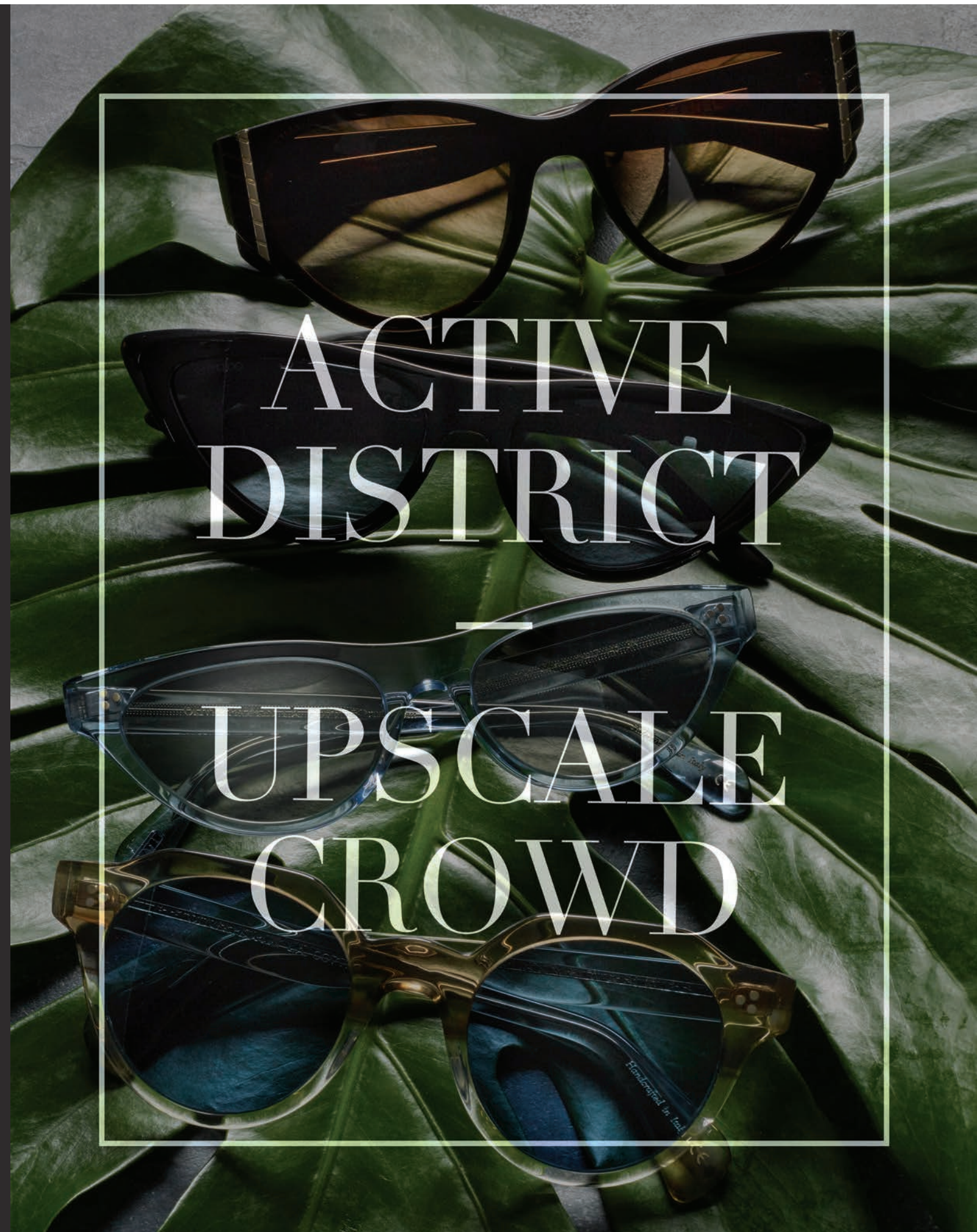
*“People will stare.  
Make it worth their while.”*

- HARRY WINSTON

---

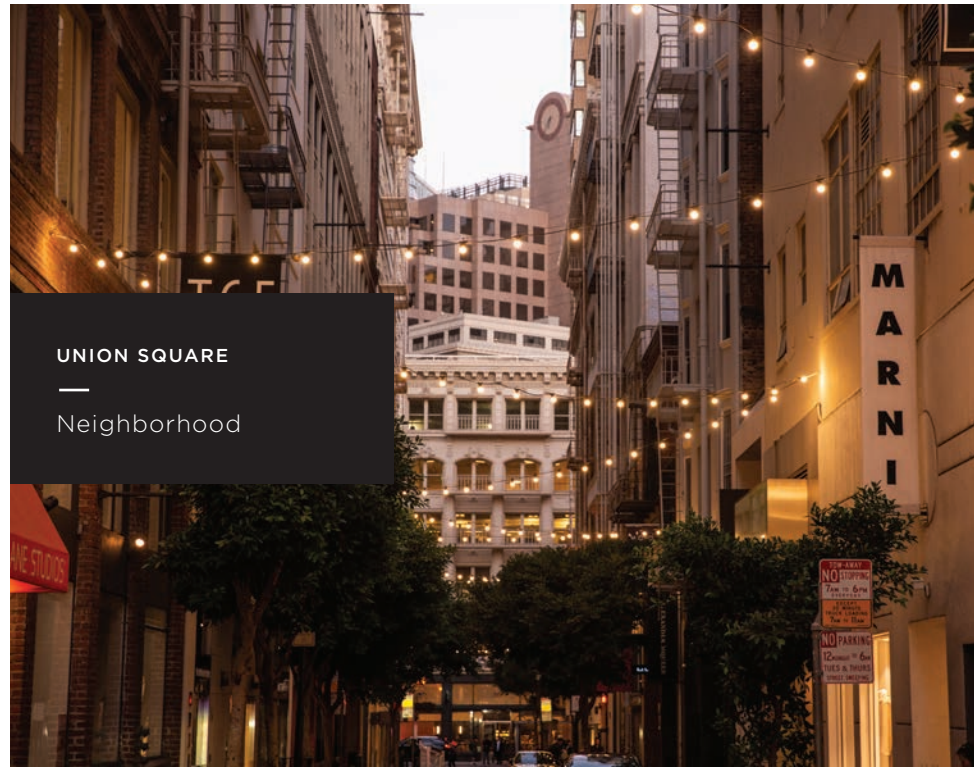
100 Stockton provides iconic retail space meaningfully curated in the heart of Union Square. The property benefits from a uniquely affluent residential base and daytime populations exceeding 1.1 million within the immediate vicinity. As a top tourist destination for domestic and international travelers and conventions, Union Square provides traffic counts that rival those of New York’s Times Square and London’s Oxford Street. Nearly 26 million people visit the City and spend over \$10 billion annually. Adjacent brands include Neiman Marcus, Louis Vuitton, Bulgari, Chanel, Loro Piana, and numerous luxury hotels, including the Four Seasons Hotel & Residences and Ritz Carlton.

---



ACTIVE  
DISTRICT

UPSCALE  
CROWD



ROOFTOP VIEW  
—  
Restaurant & Deck





*For leasing opportunities, please contact:*

**ASHLEY BROWN** / BLATTEIS & SCHNUR / 310.282.5300 / [abrown@blatteisschnur.com](mailto:abrown@blatteisschnur.com)

**JENNIFER FITZPATRICK** / BLATTEIS & SCHNUR / 773.472.5944 / [jfitzpatrick@blatteisschnur.com](mailto:jfitzpatrick@blatteisschnur.com)

**KAZUKO MORGAN** / CUSHMAN & WAKEFIELD / 415.773.3546 / [kazuko.morgan@cushwake.com](mailto:kazuko.morgan@cushwake.com)

**BLATTEIS & SCHNUR** / 10250 Constellation Blvd / Suite 1050 / Los Angeles, CA 90067 / 310.282.5300

---

100Stockton.com

